



**Richards-Wilcox**  
Garage Doors

# THERMATITE®



## T175-MR & T175 OVERHEAD SECTIONAL INSULATED STEEL DOORS

- Fabricated from pre-painted, hot dipped stucco embossed galvanized steel.



- Insulated with 1.75" of Neufoam™ polyurethane insulation. CFC and HCFC free.



- Sections feature Weatherlock™ thermal break and ship lap section joint.



**Multi-Ribbed**

### Unique Multi-Ribbed (MR) Profile

- Multi-Ribbed profile complements contemporary architecture.
- Perfect choice when aesthetics are a key consideration.
- Non-repeating stucco surface texture resists scratches and dirt.



**Ribbed**

### Ribbed Profile

- Recognized as a standard look on many door systems that are already installed.
- RW can provide matching section replacement options to customers quickly and efficiently.

# PRODUCT SPECIFICATIONS

## SECTION DETAILS

**SECTION THICKNESS** 1 3/4" (45mm)

**THERMAL VALUE OF SECTIONS\***

**R** 16 ft<sup>2</sup> hF/Btu

**FACE SHEET PROFILE** Multi-Ribbed / Ribbed

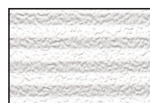
**EXTERIOR FACE SHEET THICKNESS**

0.019" (0.48mm)

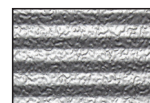
**MAXIMUM OPENING WIDTH\*\*** 36'-2" (11024mm)

**MAXIMUM OPENING HEIGHT** 22' (6706mm)

**FINISH** Two coat, baked-on paint system on exterior side, primer and polyester finish coat.



White



Silver

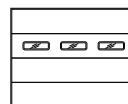


Brown

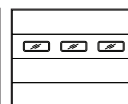
## GLAZING OPTIONS



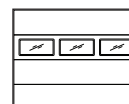
Type AA (26"x 13")



Type B (24"x 6")



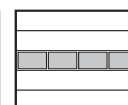
Type CPL (24"x 8")



Type D (34"x 16")



Type E (24"x 12")



Fullview

## WARRANTY

**10 years against delamination of the panels**  
**1 year on materials and workmanship**

\*Thermal Values Calculated. \*\*For larger sizes, please consult factory.

**Flexible Top Weather Seal**

(Optional)

**Glazing**

Type: AA, B, CPL, D, E & FV  
(Optional)

**Neufoam Core**

T175-MR / T175 (R16.00)

**Thermal Break and  
Weatherlock Seal**

**Continuous, top and  
bottom internal steel  
reinforcement for  
hardware mounting**

**0.063" (1.6mm)  
Galvanized End Caps**

**Pre-painted, hot dipped galvanized  
steel sheets, stucco embossed &  
rib or multirib reinforced**

**Bulb-shaped Weatherlock weather  
strip with continuous retainer the  
full width of door**

## SECTION SCHEDULE

DOOR OPENING HEIGHT	Sections High	DOOR OPENING WIDTH	Max no. of Windows
7'-1" to 8'-1" (2159mm to 2464mm)	4	8'-0" to 9'-2" (2438mm to 2794mm)	2
8'-2" to 10'-1" (2489mm to 3073mm)	5	9'-3" to 12'-2" (2819mm to 3708mm)	3
10'-2" to 12'-1" (3099mm to 3683mm)	6	12'-3" to 16'-2" (3734mm to 4928mm)	4
12'-2" to 14'-1" (3708mm to 4293mm)	7	16'-3" to 19'-2" (4953mm to 5842mm)	5
14'-2" to 16'-1" (4318mm to 4902mm)	8	19'-3" to 24'-2" (5867mm to 7366mm)	6
16'-2" to 18'-1" (4928mm to 5512mm)	9	24'-3" to 28'-2" (7391mm to 8585mm)	7



**Richards-Wilcox**  
Garage Doors

**1-800-667-1572**  
**www.rwdoors.com**



**MADE IN CANADA**