



**Richards-Wilcox**  
Garage Doors

# ROLLTITE™



## **R522, R520, R518** **ROLLING STEEL FIRE DOORS**

The R500 Series is manufactured to the highest standards featuring space saving designs with user-friendly operation. The fail-safe operating system is activated by fusible links, smoke detectors, or can be wired to a central alarm system by one of our release devices.

R-W's fire door is designed and manufactured to mount to steel, concrete or masonry block (filled or hollow).

Motor operator include time delayed automatic closing, auto reset overload protection, monitored battery back-up, low battery warning, keyed test station, detector/alarm input, 24-volt control circuit.

### **STANDARD FEATURES**

- Size up to 30' wide by 24' high (max 600 sq. ft.)
- Easy and fast reset & testing
- UL /ULC / FM rated
- Conforms to NFPA 80
- 25,000 cycle spring
- 2 year limited warranty



warehouse



retail



industry



security

# ROLLTITE R500 SERIES ROLLING FIRE DOOR

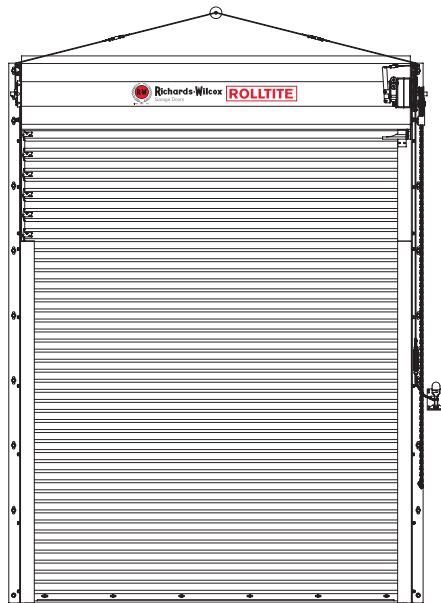
## MODEL 522 (22-GAUGE SLAT), MODEL 520 (20-GAUGE SLAT), MODEL 518 (18-GAUGE SLAT)

### PRODUCT SPECIFICATIONS

Developed to allow the safe emergency closing when activated by our 165° fusible link, or when activated by another release device. The door will automatically descend to the floor at a controlled rate. This system eliminates the danger associated with a free-falling door.

#### Drop Testing and Auto Reset

Floor level release and reset handle provided with the chain hoist. Key test station provided with motor operation. No tools or ladders required to drop test or reset the door.



<b>Max Width</b>	30'
<b>Max Height</b>	24'
<b>Materials</b>	Galvanized steel with baked polyester & epoxy primer.
<b>Max sq. ft.</b>	600 sq. ft.
<b>Curtain</b>	3" flat slats, 22, 20 or 18 ga.
<b>Finish/Colour</b>	Standard colours (white, gray, tan or galvanized). Powder coat available in RAL.
<b>Endlocks</b>	Endlock or windlocks on every alternate slats.
<b>Operation</b>	Manual/Chain hoist or electric operator.
<b>Guide</b>	Structural steel with 30" service cutout and removable headstop. 3/16" minimum thickness.
<b>Bottom Bar</b>	Structural steel two-piece angle and bulb weatherseal.
<b>Hood</b>	24 ga galvanized steel with baked epoxy primer and baked polyester. Over 16' wide, steel bracket added.
<b>Counterbalance</b>	25,000 cycle oil-tempered helical torsion spring.
<b>Barrel</b>	Steel pipe drum build with maximum deflection of .03"/foot width. Spring to be mounted on a cold rolled steel inner shaft with self-lubricating end ball bearing.
<b>Brackets</b>	Head plate fabricated from 1/4" steel.

#### OPTIONS

**Fire Ratings:** 45/90 minutes, 3 hours or 4 hours (18-gauge only).

**Automatic Closing Devices:** XP, XPBB, AFCB.

**Detection and Activation Devices:** Smoke and heat detector, horn.

**Optional Mounting:** Between jamb under lintel (fascia required) or above lintel.

**Vision Panels:** 5" wide x 3/4" high available on any UL rating.

**Flame Baffle and Jamb Seal:** Helps prevent smoke infiltration through the header and jamb.

NFPA105 Smoke control upon request.

**High Cycle Springs:** Available in 50,000 cycles and 100,000 cycles.



#### FINISH



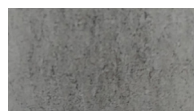
White Topcoat



Gray Topcoat



Tan Topcoat



Galvanized



Powder coat finish is available in a variety of color options. 40-year film integrity and a 35-year no-chalk/no-fade limited paint warranty.



**Richards-Wilcox**  
Garage Doors

**1-800-667-1572 • [rwdoors.com](http://rwdoors.com)**

5100 Timberlea Blvd Mississauga ON L4W 2S5 Canada