



Richards-Wilcox™
Garage Doors

ROLLTITE™



R324 & R322 ROLLING STEEL DOORS

R-W R300 SERIES COMMERCIAL SLAT DOOR is produced with the highest quality and durability in the industry. With nylon end locks and 12-gauge roll formed guides is an economical alternative slat door that is easy to maintain and service. The curtain is pre-assembled on the drum at the factory making the installation easier and faster. The 300 Series consists of 3" slats in both 24 and 22 gauge steel with a flat or curved profile. The slats are commercial grade galvanized steel and coated with Super Durable polyester paint. Model 324, 24-gauge, is available in sizes up to 14' wide x 14' high. Model 322, 22-gauge, is available in sizes up to 12' wide x 12' high, both models are a perfect choice for freight terminals, commercial, and industrial applications.

Standard Features

- Roll formed 12 gauge galvanized guides
- Nylon endlocks
- Dual galvanized steel slide bolt locks
- Chain hoist operation
- Drum assembly with pre-installed curtain

ROLLTITE R300 SERIES COMMERCIAL SLAT DOOR

MODEL R324 (24-GAUGE), MODEL R322 (22-GAUGE) Flat or Curved Profile (specify when ordering)

PRODUCT SPECIFICATIONS



Operation

A reduction gear chain hoist standard operator is available for all sizes.

Hardware

Is available for mounting to steel, wood or block/masonry jambs (specify when ordering).

Finish



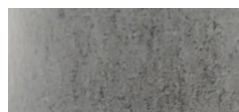
White Topcoat



Gray Topcoat



Tan Topcoat



Galvanized



Powder Coat Finish is available in a variety of color options. 40-year film integrity and a 35-year no-chalk/no-fade limited paint warranty.

Options

Steel Mounting Plates: For lateral jamb extension to provide door support.

Top Draft Stop: To seal tight at the header to reduce air infiltration.

Guide Weather Seal: To seal tight at the jambs to reduce air infiltration.

Vision Panels: 5" x 3/4" cut out spaced approximately 3" apart and covered with clear Lexan (flat slat only).

Structural Steel Upgrade Guide: 3-piece structural steel guides.

Windload: Available design to +40/-37 for 14' wide (test) Model 324 (24- gauge). Windload varies by model.

Slats

Our 24 and 22 gauge slats are manufactured from commercial grade galvanized steel and coated with Super Durable polyester paint that is backed by a 40-year film integrity and 35-year no-fade limited paint warranty.

Drum/Axle Assembly

Consists of 12" diameter galvanized steel spiral torque tube attached to 16-gauge galvanized drums supported by 1-5/16" steel tubing. All drums fitted with a grease filled, shielded radial ball bearing for a smoother operation friction and wear.

Guides

12-gauge galvanized channels (3-1/2" deep per side standard on all sizes).

Bottom Bar

A 2"x 1-1/2" galvanized 12 gauge steel angle bar is fastened to aluminum retainer with PVC bulb astragal.

Locks

Dual galvanized steel slide bolt locks attached to the bottom bar suitable for padlocks



Richards-Wilcox
Garage Doors

1-800-667-1572 • www.rwdoors.com